

PRIMARY CLOSURE/ SKIN FLAP

Following your minor surgical procedure, your wound could be a simple straight line (primary closure) or a combination of lines (skin flap).

DRESSINGS

The choice of surgical procedure will determine the type of dressing applied.

- Steri-strip dressing could be either a number of small individual strips layered horizontally over the wound, or a single piece of tape covering the length of the wound.
- A plastic, waterproof dressing may either be sprayed or placed over your wound and is designed to seal and protect the wound during the initial healing process.

Your dressings should stay intact until removal of your sutures.

Should you feel your dressing start to lift, please resecure with either micropore tape or a larger waterproof dressing (if used). These can be purchased from your nearest pharmacy.

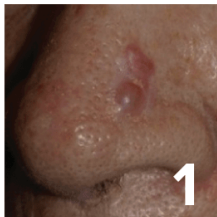
If you feel that your dressing has been compromised, due to:

- Blood, or other fluid collection under the dressing
- A reaction to the dressing

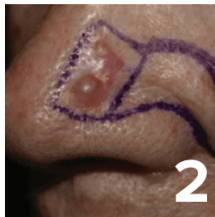
Please call the Sole'vita Surgery to talk to a nurse.

IMMEDIATE WOUND CARE

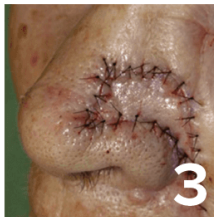
- DO NOT remove the dressing as the stitch sealing the wound is attached to it.
- You may shower the next day after the surgery allowing the water to run over the dressing. Do not rub the dressing, pat dry only, to ensure the dressing remains secure.
- It is best to keep the wound clean and dry.
- Do not apply any creams or ointment to the wound unless advised to do so by your surgeon or the nurses.



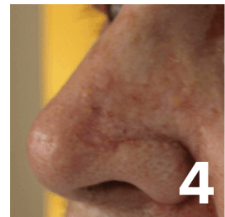
1
A typical lesion on the nose requiring a skin flap closure.



2
The surgical excision marked on the patients nose.



3
Immediately following surgery.



4
Four weeks after suture removal.

For further information on your Minor Surgical Procedure, please go to www.capsclinic.com.au/solevita/minor-surgical-procedures/

PRIMARY CLOSURE/ SKIN FLAP

- Do not under any circumstances shave over the wound areas.
- Surgical sites are vulnerable to the sun, please ensure you protect the area.
- You may experience slight numbness for three to four weeks around the incision site, which usually resolves.
- The nurses will demonstrate and discuss the pressure the massage needs to have to be effective.
- After removal of sutures and when the wound is fully healed, you may use a sunscreen and make up. We recommend mineral makeup.

WOUND CARE FOLLOWING SUTURE REMOVAL

- Treat the wound gently, the wound will remain tender for a few weeks.
- Shower normally, pat the area dry.
- One week after suture removal, begin to massage the area 2 to 3 times a day using any kind of skin moisturiser. Continue massaging for 2 to 3 months. This encourages circulation to the area, which speeds up the healing process and helps to flatten the scar. If you feel lumps in the wound these are generally the internal sutures which will dissolve over a 2 to 3 month period.

CONCERNS

The results of your procedure may be compromised by complications. Rapid intervention may reduce the chance of complications becoming a real issue. If these symptoms occur please contact us immediately.

- **You are unable to cease or slow any bleeding of the wound after applying pressure to the area for twenty minutes**
- You feel any heat or increasing pain developing in your wound
- You notice the wound getting red or excessively swollen

**IF YOU ARE CONCERNED, CALL SOLE'VITA SURGERY
ON (02) 6282 1153**

Should you have any urgent concerns outside of clinic hours, we recommend that you go to your local GP, Walk In Centre or Emergency Department.

